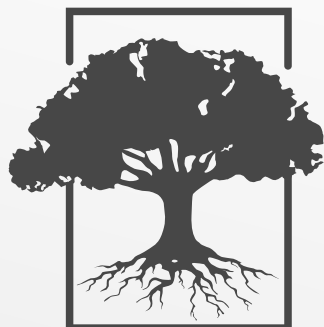


MADE IN ITALY

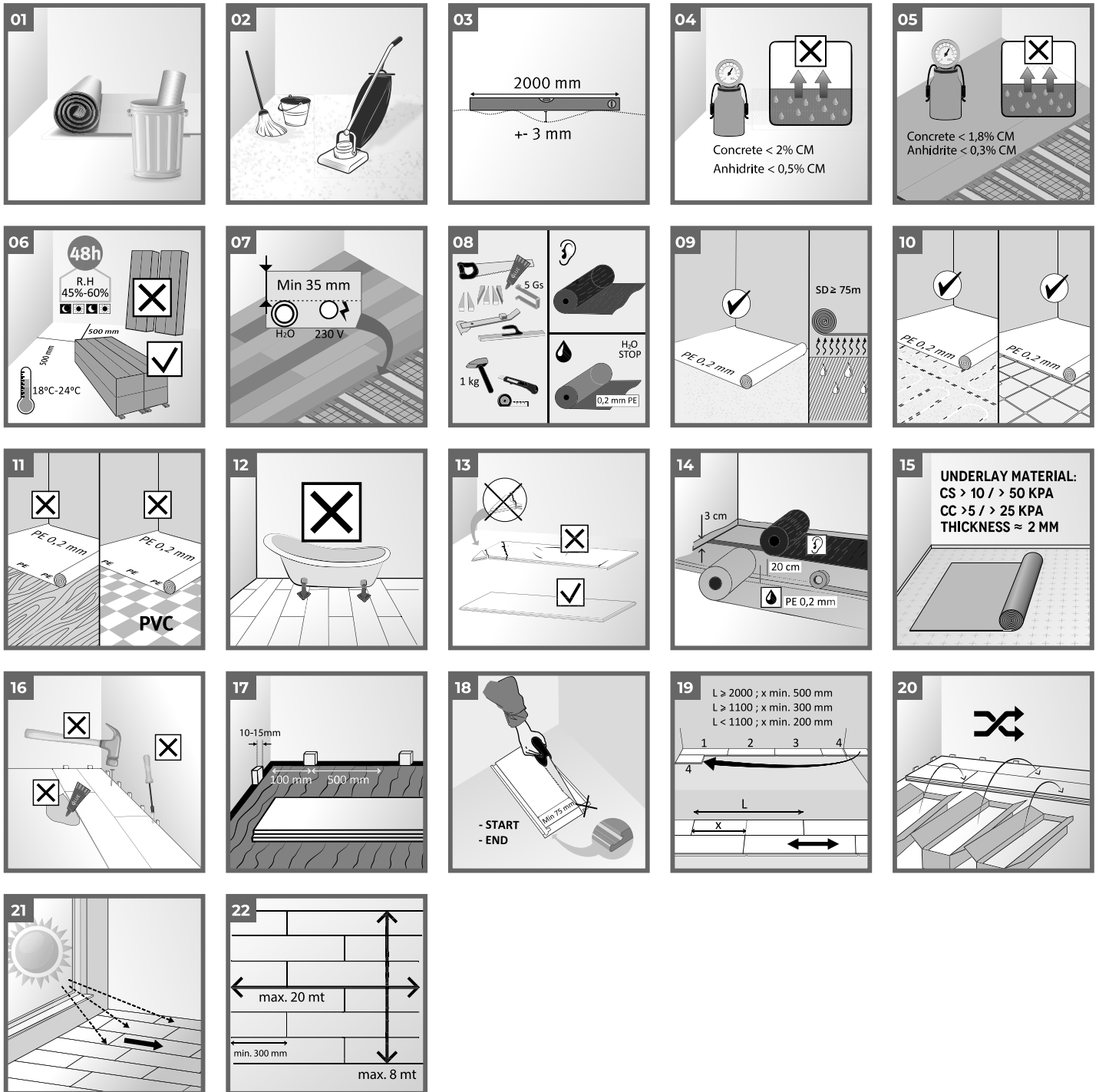


ALBEROFORTE
ITALIAN WOOD FLOORING

ASSEMBLY AND MAINTENANCE
INSTRUCTIONS

www.alberoforte.it

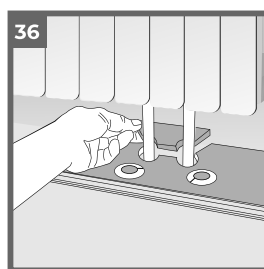
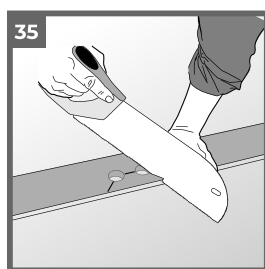
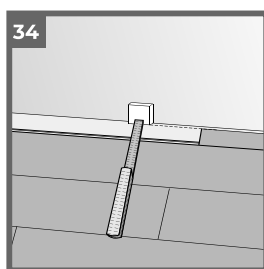
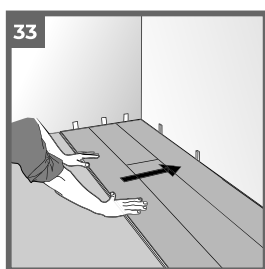
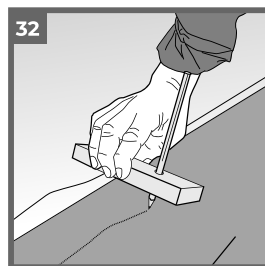
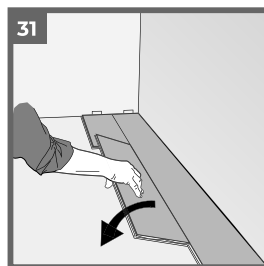
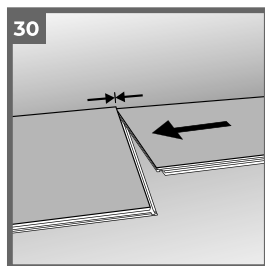
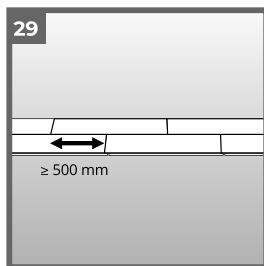
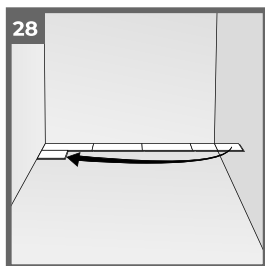
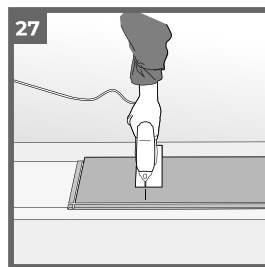
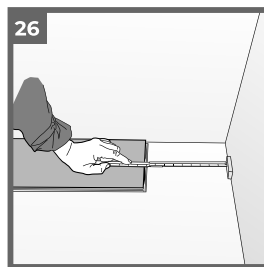
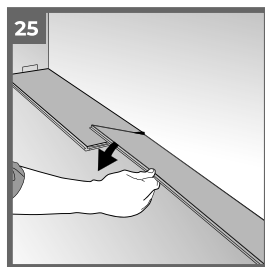
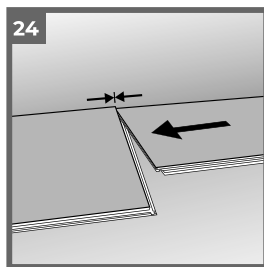
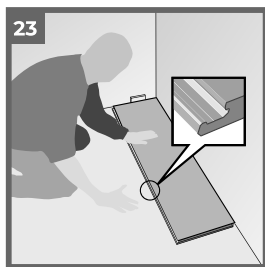
IMPORTANT



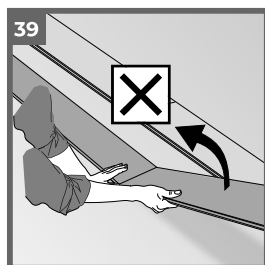
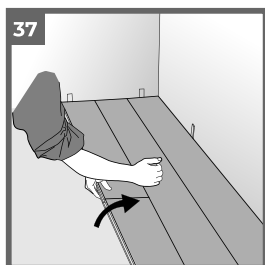
Installation and subfloor preparations

- 01** The floor installation must be installed after all painting and fixed furniture installations have been made (i.e. kitchen cupboards). Remove all wall to wall carpets and inspect the subfloor. It must be dry, even and firm. All kinds of unevenness such as paint, putty, etc. must be removed.
- 02** Vacuum the sub floor.
- 03** Check the evenness of the floor. Maximum deviation must not exceed ± 3 mm over 2 m length or crosswise.
- 04** Subfloor moisture content, concrete floors with no floor heating - CM test method - Material example: Cement screed (CT), Anhydrite screed (CA/CAF) - Requirements: CT: < 2 CM% - CA/CAF: < 0.5 CM%
- 05** Subfloor moisture content, concrete floors with floor heating - CM test method - Material: Cement screed (CT), Anhydrite screed (CA/CAF) - Requirements: CT: < 1.8 CM% - CA/CAF: < 0.3 CM%
- 06** Bring your floor packages to the room where to be installed. In order for the floor to acclimatize to the room conditions, place the unopened packages free from each other and at least 0.5 m from any wall for at least 48 hours (72 hours during heating season). It is recommended to keep the room temperature to 15-23°C before, during and after the installation.
- 07** On floor heating (water based or electrical), maximum allowed floor temperature is 27°C. This corresponds to appr. 75 W/m² for a room temperature of 20°C. Recommended interval is 15-27°C.
- 08** Spacers, handsaw or jig saw. Fine pencil, folding rule, set square, (white glue - D3, for special cuttings such as at radiator pipes etc.) and knife.
- 09** Vapour barrier must always be installed over:
- 14** Installation of vapour barrier. The PE-foil must be folded a up about 50 mm along all walls (collar principle) and finally be cut to size along the skirting. Joints must overlap 200 mm and be taped (special tape).
- 15** A combined sound absorbing / evenness levelling underlay must be installed over the vapour barrier. Recommendable thickness of an underlay is appr. 2 mm.
- 19** Min. length of the first plank is appr. 500 mm. Put a spacer towards the wall. Min. distance between short ends of planks in parallel rows must not be less than appr. 400 mm.

FLOOR INSTALLATION



DISASSEMBLY



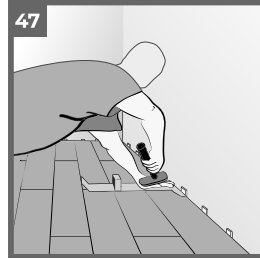
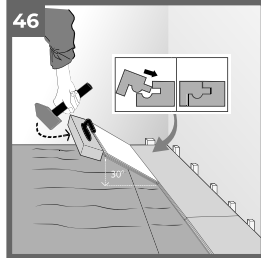
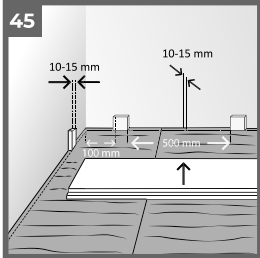
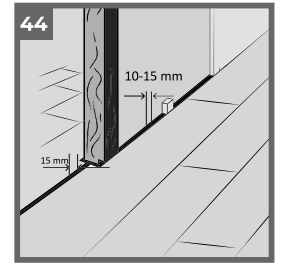
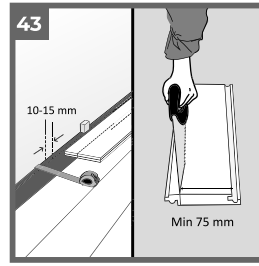
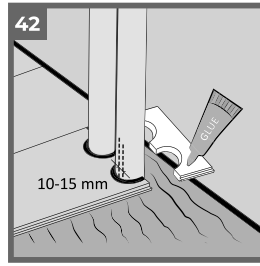
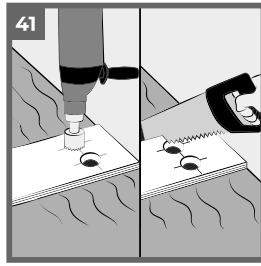
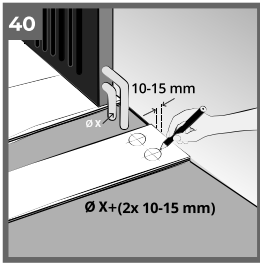
Floor Installation

- 23 First plank, first row. - Place a spacer with a thickness according to the diagram on page 1 to the left, and position the plank against the front wall with required spacers.
- 24 Second plank, first row Place this plank gently and tight to the short end of the first one
- 25 Fold the panel down in a single movement. When the panel is folded down, make sure the panels are tight against each other. Afterwards press or slightly knock at the short end just installed.
- 26 At the end of the first row, put a spacer to the wall and measure the length of the last plank to fit.
- 27 Cut the panel with a jig saw – decor side turned down or with a hand saw with the decor side visible.
- 28 Min. length of the first plank is appr. 500 mm. Put a spacer towards the wall.
- 29 Min. distance between short ends of planks in parallel rows must not be less than appr. 500 mm.
- 30 Second plank, second row. Place the panel gently and tight to the short end of the previous panel.
- 31 Fold the panel down in a single movement with a slight press to the left to the short end of the previous panel. Make sure that the panels are tight against each other both during and after this step.
- 32 First row. Adjustment to an uneven starting wall. Copy the wall line to the first floor panel row with the shown tool, disassemble the 2 or 3 rows, adjust planks and reinstall.
- 33 After 2-3 rows Adjust the distance to the front wall by placing spacers.
- 34 The final row must be minimum 50 mm wide. Remember the spacers. Put a spacer(s) before measuring. Cut the panels lengthwise.
- 35 Installation at radiator pipes.
- 36 Drill the holes 20 mm larger than the diameter of the pipes.

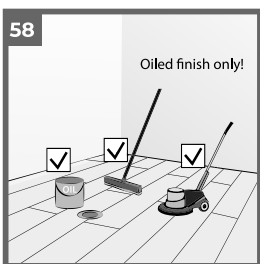
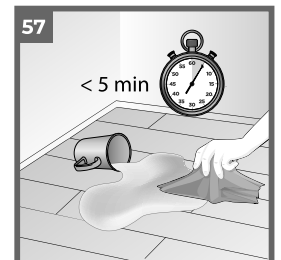
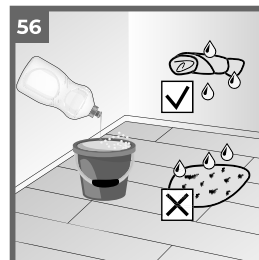
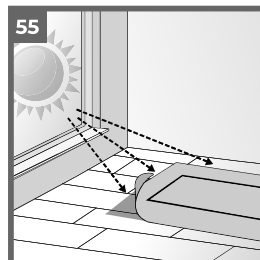
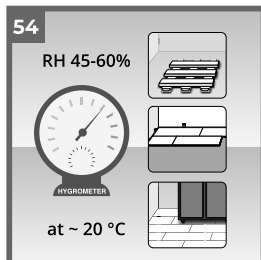
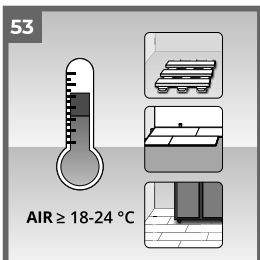
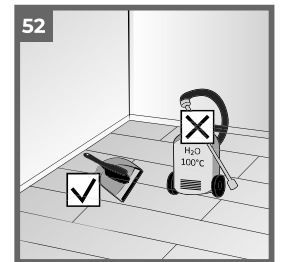
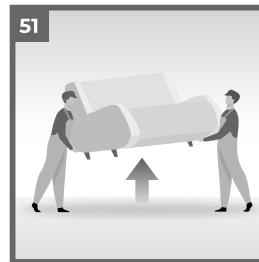
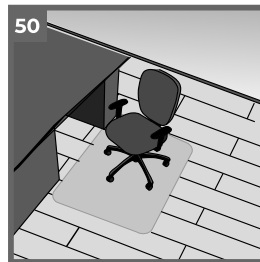
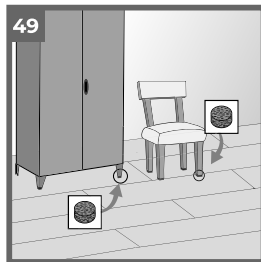
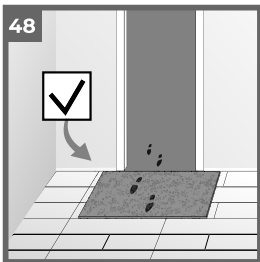
Disassembly

- 37 Your floor can be disassembled thereby enabling replacement during installation and use. Separate the whole row by carefully lifting up and slightly knocking just above the joint. Fold up and release the whole long side.
- 38 Disassemble the short ends of the panels by sliding horizontally. Start at the last installed panel.
- 39 DO NOT separate the short sides by angling.

UNIVERSAL



MAINTENANCE



5G®, 5G-i™ are trademarks of Välinge Innovation AB and any use of such marks are under license.



ALBEROFORTE
ITALIAN WOOD FLOORING

ALBEROFORTE
Via S. Maria s.n. 61046
PIOBBICO (PU) - Pesaro - ITALY
info@alberoforte.it

www.alberoforte.it

Alberoforte è un Marchio della Propara S.r.l. con sede in Via S. Maria s.n. 61046 PIOBBICO (PU)